

T 796  
.C1 H8  
Copy 1



# OFFICIAL SOUVENIR PROGRAMME

## Trans-Mississippi

MANUFACTURES  
LIBERAL ARTS  
AGRICULTURE  
HORTICULTURE  
MINING  
MACHINERY  
ELECTRICITY  
TRANSPORTATION  
STOCK  
DAIRY  
APIARY

THE  
GREAT  
WEST.

OMAHA, U.S.A.





# OFFICIAL SOUVENIR PROGRAM...

DAILY EVENTS  
OF THE EXPOSITION...  
MUSICAL PROGRAM  
AND CURRENT  
NEWS NOTES...



GUARANTEED  
CIRCULATION,  
500,000.

SAMUEL J. HOWE & CO.  
CONCESSIONAIRES  
AND PUBLISHERS.

For rates of advertising address the Publishers,  
Continental Block, Omaha.

## Trans-Mississippi and International Exposition...

June 1st to November 1st, 1898.



T79 3  
3173

GURDON W. WATTLES, PRESIDENT.  
ALVIN SAUNDERS, VICE-PRESIDENT.

CARROLL S. MONTGOMERY, COUNSEL

HERMAN KOUNTZE, TREASURER  
JOHN A. WAKEFIELD, SECRETARY.



# TRANS-MISSISSIPPI AND INTERNATIONAL EXPOSITION

AUTHORIZED BY ACT OF UNITED STATES CONGRESS  
AT OMAHA, NEB., U.S.A. JUNE 1<sup>ST</sup> TO NOV. 1<sup>ST</sup> 1898.

GENERAL OFFICES  
PAYTON BUILDING  
16<sup>TH</sup> & FARNAM STS.

SECRETARY'S OFFICE.

OMAHA, NEB. April 18th, 1898.

To Whom it May Concern:

This is to certify that the program of the daily events at the Trans-Mississippi and International Exposition published by Samuel J. Howe is the Official Program, and that no other program of the daily events at the said Exposition will be sold within the grounds.

*Gurdon W. Wattle*  
.....  
PRESIDENT.

*John A. Wakefield*  
.....  
SECRETARY.

TRANS-MISSISSIPPI  
AND INTERNATIONAL  
EXPOSITION

**OFFICERS.**

GURDON W. WATTLES . . . . . President  
 ALVIN SAUNDERS . . . . . Resident Vice-Pres't  
 HERMAN KOUNTZE . . . . . Treasurer  
 JOHN A. WAKEFIELD . . . . . Secretary  
 CARROLL S. MONTGOMERY . . . Gen'l Counsel

**Executive Committee :**

ZACHARY T. LINDSEY . . . . . Chairman, and Manager Department Ways and Means  
 EDWARD ROSEWATER . . . . . Manager Department Publicity and Promotion  
 FREEMAN P. KIRKENDALL . . . . . Manager Department Buildings and Grounds  
 EDWARD E. BRUCE . . . . . Manager Department Exhibits  
 ABRAM L. REED . . . . . Manager Department Concessions and Privileges  
 WILLIAM N. BABCOCK . . . . . Manager Department Transportation

**U. S. Government Commission.**

Department of Agriculture . . . . . J. H. Brigham, President of Commission  
 Treasury Department . . . . . C. E. Kemper  
 Department of the Interior . . . . . F. W. Clarke  
 State Department . . . . . W. H. Michael  
 Smithsonian Institution and National Museum . . . . . F. W. True  
 Department of Justice . . . . . Frank Strong  
 Post-Office Department . . . . . J. B. Brownlow  
 War Department . . . . . Capt. Henry C. Ward  
 Navy Department . . . . . Lieut. Commander L. C. Logan  
 Fish Commission . . . . . Wm. de C. Ravenel  
 Life Saving Station . . . . . Lieut. H. C. McLellan, U.S.N.

## STATE VICE-PRESIDENTS.

Alaska	Hon. James Sheakley	Sitka
Arizona	Hon. Charles R. Drake	Tucson
Arkansas	Hon. W. G. Vincenheller	Little Rock
California	Hon. Geo. W. Parsons	Los Angeles
Colorado	Hon. Edward F. Bishop	Denver
Georgia	Hon. Augustus Dupont	Dupont
Idaho	Hon. B. P. Shawhan	Payette
Illinois	Hon. R. Hall McCormick	Chicago
Iowa	Hon. Geo. F. Wright	Council Bluffs
Kansas	Hon. C. A. Fellows	Topeka
Louisiana	Hon. C. Harrison Parker	New Orleans
Minnesota	Hon. Frank H. Peavey	Minneapolis
Missouri	Hon. John Doniphan	St. Joseph
Montana	Hon. W. H. Sutherlin	Helena
Nebraska	Hon. William Neville	North Platte
Nevada	Hon. H. B. Maxson	Reno
New Mexico	Hon. L. Bradford Prince	Santa Fe
North Dakota	Hon. C. A. Lounsberry	Fargo
Oklahoma	Hon. Eugene Wallace	Oklahoma City
Oregon	Hon. B. S. Cook	Salem
South Dakota	Hon. Thomas H. Wells	Hot Springs
Texas	Hon. S. J. T. Johnson	Dallas
Utah	Hon. Lewis W. Shurtliff	Ogden City
Washington	Hon. Geo. W. Thompson	Tacoma
Wyoming	Hon. Frank P. Graves	Laramie

## THE BOARD OF WOMAN MANAGERS.

(In charge of Bureau of Education.)

OMAHA.—Miss Anna Foos, Mrs. W. W. Keysor, Miss Kate McHugh, Miss Alice Hitte, Miss Orietta Chittenden, Mrs. W. P. Harford, Mrs. E. A. Cudahy, Mrs. Stella R. Feil.

SOUTH OMAHA.—Mrs. E. B. Towle, Mrs. A. A. Monroe.

COUNCIL BLUFFS.—Mrs. Edith M. E. Reed, Mrs. Sarah C. Key.

FIRST DISTRICT.—Mrs. A. J. Sawyer, Mrs. A. W. Field, Lincoln.

SECOND DISTRICT.—Mrs. Omar Whitney, Elk City; Miss Helen Chase, Papillion.

THIRD DISTRICT.—Mrs. D. C. Giffert, West Point; Mrs. Nettie K. Hollenbeck, Fremont.

FOURTH DISTRICT.—Mrs. K. L. Dutton and Miss Hattie Fyffe, Hastings.

FIFTH DISTRICT.—Mrs. J. B. McDowell, Fairbury; Mrs. F. Johnson, Crete.

SIXTH DISTRICT.—Mrs. C. L. Kerr, Ansley; Mrs. Hattie Hunter, Broken Bow.

### Officers.

Mrs. A. J. Sawyer, Lincoln	President
Mrs. Thomas L. Kimball, Omaha	1st Vice-President
Mrs. K. L. Dutton, Hastings	2d Vice-President
Mrs. F. Johnson, Crete	3d Vice-President
Mrs. Frances M. Ford, Omaha	Secretary

### Executive Committee.

Mrs. W. P. Harford, Omaha, Chairman.
Mrs. W. W. Keysor, Omaha.
Miss Kate McHugh, Omaha.
Mrs. Edith M. E. Reed, Council Bluffs, Vice-Chairman.
Mrs. D. C. Giffert, West Point.

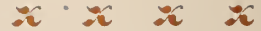


BIRD'S-EYE VIEW TRANS-MISSISSIPPI AND INTERNATIONAL EXPOSITION.

QUALITY DELICIOUS.



# M<sup>C</sup>CORD=BRADY CO.



## CORONA MOCHA AND JAVA COFFEE,

Strictly high-grade and a delicious drink. A trial will convince you of the delicious quality of Corona. Corona meets the demand for a strictly first-class, strong, well flavored coffee at a medium price and is guaranteed to please in every respect.

We pay you in Magazines for advertising Corona, instead of putting the money on fence-boards, etc., etc.

Corona is packed in a one-pound carton on which are two golden crowns; these crowns are worth one cent each to apply on subscriptions to any of the magazines named below. Save the crowns until you have the required number, send them to us by mail, postage paid, and we will have the magazine you wish sent to you for a year.

MONTHLIES.		MONTHLIES.		WEEKLIES.		GERMAN.	
	CROWNS		CROWNS		CROWNS		Kronen
Ladies' World.....	40	Demorest's.....	100	Leslie's Weekly.....	400	Münchener Fliegende Blätter.....	335
Housewife.....	50	Scientific American, (Bldg. Ed.).....	250	Youth's Companion.....	175	Gartenlaube.....	225
Woman's Home Companion.....	50	Short Stories.....	250	Public Opinion.....	250	Neber Land und Meer.....	380
Woman's World.....	100	Scribners'.....	300	Scientific American.....	300	Illinois Staatszeitung.....	95
Black Cat.....	50	St. Nicholas.....	300	Harper's Bazar.....	400	Buch für Alle.....	240
Ladies' Home Journal.....	100	Lippincott's.....	300	Harper's Weekly.....	400	Der Westen.....	200
Peterson's.....	100	Frank Leslie's Popular.....	300	Illustrated American.....	400	Chicago freie Presse.....	100
Four O'clock.....	60	Forum.....	300	Puck.....	500	New Yorker Staatszeitung.....	150
Cosmopolitan.....	100	The Arena.....	250	Judge.....	500	Nebraska Vorwärts.....	100
Argosy.....	100	Harper's Magazine.....	400	Army and Navy, (Juv.).....	250	Abendsschule, St. Louis.....	200
McCures'.....	100	Atlantic.....	400	Mining Industry and Review.....	200	Katholische Wochenblätter, Chicago.....	200
Munsey's.....	100	Century.....	400	Mining and Scientific Press.....	300		
Table Talk.....	100	North American Review.....	500	Railway Age.....	400		
Round Table.....	100	Mines and Minerals.....	200	Cycle Age.....	200		
Pocket Magazine.....	100	Amateur Sportsman.....	100	Horse Review.....	200		
Godey's.....	100	American Angler.....	100				
Delineator.....	100	Outing.....	300				

For any of above subscriptions we will accept 100 Crowns and the balance in cash at the rate of one cent per Crown. Postage must be prepaid or order refused.

If your grocer does not handle Corona SEND US HIS NAME AND WE WILL SEE THAT YOU ARE SUPPLIED.

RETAIL AGENTS WANTED FOR OUR FINE COFFEES IN TOWNS WHERE WE ARE NOT REPRESENTED.

It will pay retailers to write for particulars or call at our store and investigate.

## M<sup>C</sup>CORD=BRADY CO.,

13TH AND LEAVENWORTH STS.

OMAHA, NEB.

..... Do not fail to see our exhibit, Space 473, Manufactures Building. ....





Copyright, 1897.

CANAL COURT, Looking West.





ARCH OF STATES.



ADMINISTRATION ARCH.

ESTABLISHED 1891

ESTABLISHED 1891



# The American Chicory Co.

...FACTORIES AT OMAHA, FREMONT, O'NEILL, NEB....

Manufacturers of all forms of

## Chicory, Coffee Essence, and Cereal Coffee

The American  
Chicory  
Company,

of Omaha, manufactures all forms of Chicory, but especially recommend for domestic use their

Flag  
Brand  
Granulated  
Chicory

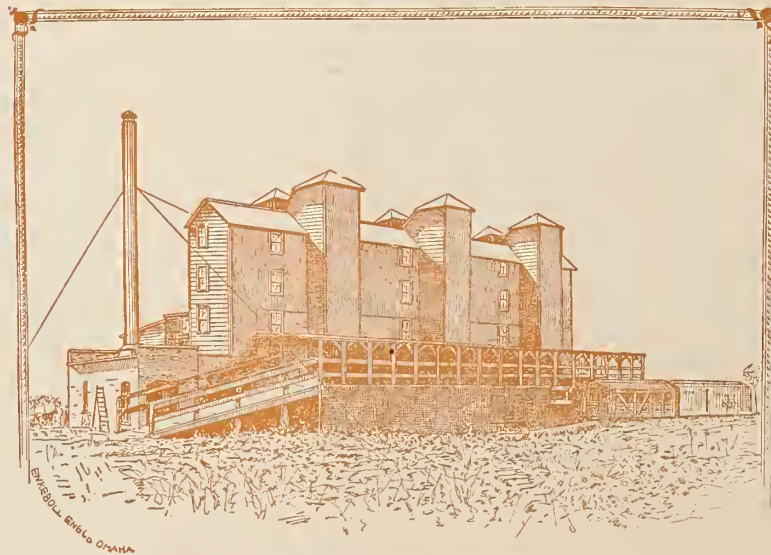
as being the best adapted for mixing with coffee.

IN THE...  
LADIES' HOME JOURNAL  
MRS. RORER SAYS:

"French coffee is made from a mixture of Java, Mocha, and chicory. I use, as a rule, four ounces to each pound of coffee. I consider the chicory indispensable to good coffee."

Chicory does more than make  
Coffee delicious....

It Purifies It—  
Makes it Healthful.



FACTORY AT FREMONT, NEB.

...Ask Your Grocer for "FLAG BRAND" IT IS THE Purest and the Best



U. S. GOVERNMENT BUILDING.

Designed by the Supervising Architect.

# OMAHA BICYCLE CO.

---

..SELLS BICYCLES

CHEAPER THAN ANY HOUSE  
WEST OF CHICAGO.

SUPPLIES

REPAIRING

RENTING

— ALWAYS  
RELIABLE

SECOND-HAND  
WHEELS

\$5.00

...TO...

\$20.00



NEW WHEELS

\$19.00

...TO...

\$25.00



SOLE AGENTS  
FOR THE

STERLING  
STORMERS  
MONSONS  
TRINITY  
PENNANTS  
PEERLESS



S.=E. Cor. Sixteenth and Chicago Sts.

ED. T. HEYDEN, MANAGER.

— OMAHA, NEB.



Copyright, 1897.

AGRICULTURE BUILDING .

Cass Gilbert. Architect, St. Paul.



*W. Dewees Wood Co. McKeesport, Pa.*

*Sole Manufacturers of Wood's Smooth Irons  
and Patent Planished Sheet Iron.*



## THE TRANS-MISSISSIPPI AND INTERNATIONAL EXPOSITION.

The Trans-Mississippi Exposition, aside from being an exhibit of the almost fabulous resources of the vast region west of the Mississippi river, will be a world's display of industrial art in all its varied forms. The buildings are elaborated on a scale second only to that of the World's Fair, and in point of architecture and artistic decorations, quite as grand and imposing.

The origin and purposes of the Exposition are set forth in the following resolution passed by the Trans-Mississippi Commercial Congress, held at Omaha in 1895:

*“Whereas*, We believe that an Exposition of all the products, industries, and civilization, of the states west of the Mississippi river, held at some central gateway where the world could behold the wonderful capabilities of these great wealth-producing states, would be of great value, not only to the Trans-Mississippi states, but to all the homeseekers in the world; therefore,

*“Resolved*, That the United States Congress be requested to take such steps as may be necessary to hold a Trans-Mississippi Exposition at Omaha, in the year 1898, and that the representatives of such states and territories in Congress be requested to favor such an appropriation as is usual in such cases, to assist in carrying out the enterprise.”

After passing the resolution and effecting a temporary organization, articles of incorporation were duly filed, authorizing a capital stock of \$1,000,000.

The state of Nebraska, through its legislature, appropriated \$100,000.

The county of Douglas, in which Omaha and the Exposition are located, appropriated \$100,000; and the city of Omaha, through its various boards, has exceeded that amount.

The National Government not only appropriated \$200,000, but by Act of Congress recognized the Trans-Mississippi and International Exposition as a National and International Exhibition, with all privileges belonging thereto, including the right to import exhibits free of duty; to strike memorial medals through the mints; to issue, through the Post-Office Department, a new series of stamps bearing designs in honor of the

occasion; and the President of the United States, through the State Department, has secured recognition of the governments of all the civilized nations.

Although the original intention, as set forth in the resolution, was to include only the states west of the Mississippi river, the plan has developed to such an extent that it now includes about forty states, which have appropriated amounts varying from \$5,000 to \$100,000 each. Many of these states have established their headquarters in their own buildings, and the Exposition promises to exceed in every direction the original project.

In view of the expansion of the project and the various departments and branches connected with the Exposition, and in order to enable the visitors to receive the full benefit of their time and money expended, a program of daily events has been suggested, and the Exposition management have authorized the publication of this OFFICIAL PROGRAM, through which the public will be informed as to the special days and daily events as fast as they are decided upon by the officials in charge.

#### GENERAL VIEW OF THE EXPOSITION.

Facing the lagoon are arranged in an artistic manner the principal buildings of the Exposition. The symmetry in architecture and harmony in coloring, with decorations and statuary, with the latest appliances for illumination, present a view more brilliant and charming than has been heretofore obtained in the art of Expositions. The lagoon and the main court present to the night visitor a scene of enchantment far surpassing the conceptions of Arabian Nights Entertainment, and the varied colorings of buildings and decorations, under the multiplied combinations of electric lighting, eclipse the scenes in the fiction of Aladdin and his wonderful lamp. The system of illumination adopted has never been attempted at any former Exposition. Counting all the lights, including those which project from the buildings, there are nearly ten thousand incandescents, with a combined power of two hundred thousand candles. They are arranged in circular form, so that, without shadows, they cast a soft golden light, making the court lighter than day. In these great buildings about the

lagoon are placed the exhibits of the boundless natural resources of the United States, and exhibits of foreign countries, with the latest improved machines and mechanisms, and the products of the fields, the forests, the mines, and the factories. In short, the Exposition is one grand display of progress in the arts, sciences, industries, education, and government.

#### REPRESENTATION BY STATES.

The states represented by separate buildings on the grounds are Nebraska, Illinois, Wisconsin, Montana, Oregon, Georgia, New York, Minnesota, Kansas, Arkansas, and Colorado, each of which will receive special attention in the OFFICIAL PROGRAM upon their respective state days.

The states which will have exhibits in the buildings of the Exposition are Wyoming, Nevada, California, Arizona, Arkansas, Alabama, Florida, Kentucky, Texas, North Dakota, South Dakota, Missouri, Ohio, Michigan, Indiana, Idaho, Tennessee, Arizona, New Mexico, Oklahoma, and Indian Territory.

#### PRIVATE EXHIBITS.

This Exposition is most magnificent in the line of private exhibits, unsurpassed in this respect by even the World's Fair. Here the manufacturers and jobbers of the East meet their customers in the "Greater West" with elaborate and painstaking displays of the latest and best products in machinery, electricity, commerce, and liberal arts. Among these the visitor will be attracted by displays of the Bemis Omaha Bag Co., Leggett & Myers, Montgomery, Ward & Co., the Gulf Railway, W. Dewees Wood Co., McCord-Brady Co., and the Burlington Railroad Co.

#### AMUSEMENTS.

On the Midway are grouped the amusement features of the Exposition, and the visitor finds here not only the best attractions of former expositions, but many new ones. Here is exhibited European and Oriental life, its customs and costumes, its bewitching music, song, and dance, in strange contrast with the gayety of

up-to-date American life. Among these attractions are the Moorish Village with its quaint exterior views and gorgeous interior furnishings, and a luxurious and real harem; Streets of Cairo, with all the din and bustle of an Egyptian mart; Streets of all Nations; an Irish Village inhabited by real Irish—men, women, and children, the sunniest and funniest that ever came over; a miniature train, the smallest in the world; a baby incubator, a wonderful electrical invention; Hagenbeck's Trained-Animal Show; an Egyptian Pyramid; picture-projecting machines; a cyclorama of the Merrimac and the Monitor, the largest in the world; a mining tunnel, with accompanying shafts and cross-cuts; a Wizard's Temple filled with Gypsies skilled in the occult science of palmistry; a Palace of Illusions, with mirrors and Maze; the Haunted Swing; a Scenic Canal; a Scenic Railway; Shooting the Chutes; Rolling the Roll; the Cosmopolis, a reproduction of streets of Seville, Pompeii, Paris, Naples, and Havana; the latest, biggest and best Wild West Show; a Trip to Klondike, over drifting ice and snow; the Blowing Up of the Maine; two immense pavilions where the weary visitors may rest and drink the beers which have made Pabst and Schlitz famous; theatres with the latest and best vaudeville attractions. This brief summary of what may be seen on the Midway of the Trans-Mississippi and International Exposition is sufficient for the visitor to make comparison with the amusement features of other expositions.



## LIST OF SPECIAL DAYS.

May 30th, Memorial Day.

June 1st, Exposition Day.

June 11th, Nebraska Maccabees' Day.

June 14th, Flag Day.

June 18th, Wisconsin Day.

June 21st, Illinois Day.

June 24th, Swedish Day.

July 4th, Independence Day.

August 10th, Red Men's Day.

August 11th, Tennessee Red Men's Day.

August 27th, Bohemian Day.

September 5th, Labor Day.

September 15th, New England Day.

October 18th, Tennessee Day.

October 21st, Columbus Day.

The above list will be extended in succeeding issues of this Program.



**DOCTORS**  
SEARLES  
AND  
SEARLES,  
SPECIALISTS



20 Years Experience, Treatment by Mail, Examination and Consultation Free.  
Guarantee to cure speedily and radically all diseases of the Nervous System, and all Chronic and Private Diseases of Men and Women: all diseases of the Nose, Throat, Chest, Stomach, Liver, Blood, and Skin: Hydroceles, Piles, Rectal Ulcers and all kindred affections, even when all others have failed. Method new. Call on or address with stamp. **DRS. SEARLES & SEARLES,**  
One Consultation, which is **FREE** of Charge, will convince you. **Office, 119 So. 14th St., OMAHA, NEB.**

GO TO —————

**C. M. Foster's**  
**PHARMACY**

....FOR....



**PURE DRUGS**  
**FINE CIGARS** AND  
**DELICIOUS SODA WATER**

16th and Webster Streets.

Drexel Hotel.



**Gained Verdict of Excellence**

Make your headquarters at 1409 Douglas St. while in the city. The largest.....

WHOLESALE AND RETAIL

**CIGAR AND PIPE HOUSE**  
**IN THE WEST.**

**W. F. STOECKER,**

1409 Douglas Street,  
OMAHA, NEB.

# Conventions



The following is a list of Associations and Societies that have selected Omaha as the place for their annual meetings for the year 1898.

A. O. U. W. Convention.  
National Congress of Mothers.  
National Populist Committee Meeting.  
The Mixed Congress.  
Royal House of Midi.  
Daughters of Sphinx.  
National Cricket Club.  
National Indian Institute.  
Trans-Mississippi Turnfest.  
National Philatelic Society.  
National Dental Congress.  
Society of American Florists.  
Nebraska Dental Association.  
National Pure Food Congress.  
Western Editorial Federation.  
Nebraska Poultry Association.  
National Live Stock Exchange.  
American Forestry Association.  
American Fisheries Association.  
National Congress of Musicians.  
Nebraska State Medical Society.  
Independent Order of Foresters.  
National Detectives' Association.  
Swedish Evangelical Convention.  
Dairymen's National Association.  
Travelers' Protective Association.  
The American Malze Propaganda.  
National Good Roads Parliament.  
National Central Labor Congress.  
National Bee Keepers' Association.  
National Eclectic Medical Society.

Nebraska Eclectic Medical Society.  
Nebraska Sængerbund Sængerfest.  
State Federation of Woman's Clubs.  
Old-Time Telegraphers' Association.  
American Association of Nurserymen.  
United States Veterinary Association.  
Nebraska State Horticultural Society.  
Superintendents of Railway Telegraph.  
Grand Lodge of Nebraska. A. F. & A. M.  
National Association of Dental Faculties.  
American Association of Agricultural Colleges and Experiment Stations.  
Annual Convention of American Cemetery Superintendents.  
The Society of the United States Military Telegraph Corps.  
United States League of Building and Loan Associations.  
American Association of Farmers' Institute Managers.  
Annual Tournament of Northwest Cricket Association.  
The Western Surgical and Gynecological Association.  
General Assembly of United Presbyterian Church.  
Nebraska State Association of Funeral Directors.  
Gulf and Interstate Committees.  
The Western Star Court.  
Swedish Epworth League.  
National Council of Women.  
Liberal Congress of Religions.  
Nebraska Veteran Free Masons.  
Western Negro Press Association.

Afro-American Protective League.  
American Institute of Homœopathy.  
Danish Lutheran Church of America.  
National Association of Postal Clerks.  
National League of Republican Clubs.  
Nebraska Retail Dealers' Association.  
Nebraska State Jewelers' Association.  
Grand Commandery Knights Templar.  
Nebraska State Pharmaceutical Society.  
Western District Bohemian Tournament.  
National Convocation of Woman's Clubs.  
National Funeral Directors' Association.  
National Convention of Bohemian Turners.  
Association of Theatrical Stage Employees.  
Scottish Rite Masons of the United States.  
Trans-Mississippi Educational Convention.  
American Institute of Electrical Engineers.  
National Association of Dental Examiners.  
National Household Economic Association.  
Nebraska Grand Lodge Knights of Pythias.  
National Congress of Retail Liquor Dealers.  
State Association of Retail Liquor Dealers.  
Nebraska State Photographers' Association.  
Trans-Mississippi Fruit Festival Association.  
Western Traveling Men's Accident Association.  
Nebraska State Homœopathic Medical Society.  
National Encampment of the Sons of Veterans.  
Trans-Mississippi Convention of Photographers.  
Western Association of Wholesale Nurserymen.  
American Association of Fairs and Expositions.  
American Association of State Weather Service.  
Fire Underwriters' Association of the Northwest.

# The University of Nebraska...

IS THE CROWN OF THE FREE PUBLIC  
SCHOOL SYSTEM OF THE STATE x

## ...TUITION

is FREE in the following  
schools and colleges.

The Graduate School.

The College of Literature,  
Science, and the Arts.

The Industrial College, in-  
cluding courses in Agri-  
culture; Engineering —  
Civil, Mechanical, and  
Electrical and the Gen-  
eral Sciences.

The School of Agriculture.

The School of Mechanic  
Arts.

The Sugar School.

The School of Domestic  
Science.

Introductory courses in  
Law, and Journalism, and  
in Medicine.



THE SUMMER SESSION  
(Especially for Teachers.)

## A TEACHERS' COURSE

Reasonable tuition in the following:

The College of Law x Affiliated Schools of Art and Music



...The University opens Sept. 13, 1898

Calendar free on application to the Chancellor.



Program for the Opening Exercises  
... OF THE ...  
TRANS-MISSISSIPPI AND INTERNATIONAL EXPOSITION  
To be Held on Wednesday, June 1, 1898.

---

The parade will form on Douglas street between 14th and 16th streets and start for the Exposition grounds at 10 o'clock a. m., in the following order:

Marshal, Major T. S. Clarkson.

Aides: Dudley Smith, T. C. Shelley. Geo. W. Holbrook, W. G. Schriver, H. W. Thomas.

Band.

Nebraska State University Cadets, Major Charles H. True, Commanding.

Band.

OFFICIALS OF EXPOSITION.

Speakers and Invited Guests in carriages.

Travelers Protective Association of America.

Band.

Omaha High School Cadets, Lieut. Campbell, U. S. A., Commanding.

Uniformed Civic Societies.

Band.

The line of march will be from 14th street west to 16th street; 16th street north to Chicago street; Chicago street west to 19th street; 19th street north on Boulevard to Arch of States, 20th-street entrance to Exposition Grounds.

# OPENING EXERCISES

The opening exercises will be held at the east end of the Grand Court, and will consist of the following program:

Music: Jubilee, Overture—Weber.  
United States Marine Band, William F. Santelmann, Leader.

Prayer by Rev. Samuel J. Nichols, of St. Louis.

Address by Gurdon W. Wattles, President of Exposition.

Address by Senator William V. Allen.

Music: Song of Welcome—Words by Henry M. Blossom, Jr.; Music by Mrs. H. H. A. Beach.  
By Trans-Mississippi Exposition Chorus of 150 voices,  
United States Marine Band, accompaniment. Prof. Willard Kimball, Director.

(See Page 32.)

Address by Hon. John N. Baldwin, of Council Bluffs, Iowa.

Music: Fantasia, "The Voice of Our Nation," United States Marine Band,  
William F. Santelmann, Leader.

TELEPHONIC MESSAGE from the President of the United States, WILLIAM MCKINLEY,  
will be received and read by His Excellency, Silas A. Holcomb, Governor,  
who will also make a short address in behalf of the State of Nebraska.

Starting of Machinery by electricity by President of the United States.

Music: National Hymn, "America,"  
Exposition Chorus, United States Marine Band, and Audience.

(See Page 33.)

### AFTERNOON EXERCISES.

- 2.00 p. m.—Concert at Music Pavilion, on the Grand Plaza, by United States Marine Band, Wm. F. Santelmann, Leader.
- 4.00 p. m.—Reception tendered by the President and Executive Committee of Exposition to the distinguished guests and the public at the Government Building.

### EVENING EXERCISES.

- 8.15 p. m.—Grand Opening Concert will be given in the Auditorium by Theodore Thomas's Chicago Orchestra, Arthur Mees, Conductor, and Soloists.
- 9.00 p. m.—Grand Opening Display of Fire Works, given gratuitously by A. L. Due Fire Works Co., of Cincinnati, Ohio, on North Tract Exposition Grounds
- The Travelers' Protective Association of America will be in convention, assembled at Creighton Hall, during the day.



## JUNE 2, THURSDAY.

---

- 2.00 p. m.—Concert at Music Pavilion, on Grand Plaza, by United States Marine Band, of Washington, Wm. F. Santelmann, Leader.
- 8.15 p. m.—Concert in the Auditorium, by Theodore Thomas's Chicago Orchestra, Arthur Mees, Conductor, and Soloists.
- 8.15 p. m.—Concert at the Music Pavilion, Grand Plaza, by the United States Marine Band, Wm. F. Santelmann, Conductor.
- Session of the Travelers' Protective Association of America will be in convention, assembled at Creighton Hall, during the day.
- 8.00 p. m.—A Reception will be given at the Club Rooms, corner 16th and Harney, by the Traveling Men's Trans-Mississippi Club to the Traveling Men's Protective Association of America, and at—
- 8.30 p. m.—A Dancing Party, at Creighton Hall.

## JUNE 3, FRIDAY.

---

- 2.00 p. m.—Concert at Music Pavilion, on Grand Plaza, by United States Marine Band, of Washington, Wm. F. Santelmann, Leader.
- 8.15 p. m.—Concert in the Auditorium, by Theodore Thomas's Chicago Orchestra, Arthur Mees, Conductor, and Soloists.
- 8.15 p. m.—Concert at the Music Pavilion, Grand Plaza, by the United States Marine Band, Wm. F. Santelmann, Leader.
- Session of the Travelers' Protective Association of America will be in convention, assembled at Creighton Hall, during the day.

## JUNE 4, SATURDAY.

---

- 2.00 p. m.—Concert at Music Pavilion, on Grand Plaza, by United States Marine Band, of Washington, Wm. F. Santelmann, Leader.
- 8.15 p. m.—Concert in the Auditorium, by Theodore Thomas's Chicago Orchestra, Arthur Mees, Conductor, and Soloists.
- 8.15 p. m.—Concert at Music Pavilion, Grand Plaza, by the United States Marine Band, Wm. F. Santelmann, Leader.
- Session of the Travelers' Protective Association of America will be in convention, assembled at Creighton Hall, during the day.

# THE MILLARD

J. E. MARKEL & SON, Proprietors,

Thirteenth and Douglas Streets,

...THE...

## Leading Hotel of Omaha.



Newly Refitted and Refurnished,  
and First-Class in Every Respect.



Street Cars to Exposition  
GROUNDS

PASS THE HOTEL DOORS.

# AUDITORIUM—CONCERT

## I.

WEDNESDAY EVENING, JUNE 1st.

- Festival March and Hymn to Liberty, "The Star Spangled  
Banner".....Kaun  
Overture, Egmont.....Beethoven  
Largo.....Handel  
Violin Obligato, Mr. E. Bare.  
Symphonic Poem, Omphale's Spinning-Wheel.....Saint-Saens  
Invitation to the Dance.....Weber-Berlioz

## INTERMISSION.

- Suite, Les Erinnyes.....Massenet  
Cello Obligato, Mr. Bruno Steindel.  
Waltz, Artist's Life.....Strauss  
Overture, William Tell.....Rossini

## II.

THURSDAY EVENING, JUNE 2d.

- Overture, Euryanthe.....Weber  
Andante from Fifth Symphony.....Beethoven  
(a) Traeumerei.....Schumann  
(b) Spring Song.....Mendelssohn  
Ballet Music Feramors.....Rubinstein  
(a) Torchlight Dance of the Bayaderes.  
(b) Torchlight March of the Brides of Cashmere.  
(c) Second Dance of the Bayaderes.  
(d) Wedding Procession.

## INTERMISSION.

- Vorspiel Lohengrin.....Wagner  
Air.....Bach  
Waltz, "Wine, Woman and Song".....Strauss  
March, Rakoczy.....Berlioz

## III.

FRIDAY EVENING, JUNE 3d.

- Chorale and Fugue.....Bach  
Chorus, "Oh Holy Power," Masaniello.....Auber  
The Exposition Chorus, Semi-Chorus, Organ, and Orchestra.  
Suite Peer Gynt, No. 1.....Grieg  
(a) In the Morning.  
(b) Asa's Death.  
(c) Anitra's Dance.  
(d) In the Hall of the Mountain King.  
Chorus, "Moonlight".....Faning  
The Exposition Chorus.  
March, Tannhauser.....Wagner

## INTERMISSION.

- Overture to a Comedy.....Smetana  
Chorus, "By Babylon's Wave".....Gounod  
The Exposition Chorus and Orchestra.  
Serenade.....Schubert  
Chorus, "Good Night".....Pinsuti  
The Exposition Chorus.  
Wedding March.....Mendelssohn

# MUSIC AT PAVILION ON GRAND PLAZA.

UNITED STATES MARINE CORPS.

WILLIAM H. SANTELMANN, - - DIRECTOR OF BAND.

WEDNESDAY, JUNE 1st, 2.00 O'CLOCK P. M.

1. March, "The Trans-Mississippi Exposition".....Santelmann
2. Overture, "King's Lieutenant".....Titl
3. Selection, "The Serenade".....Herbert
4. Serenade, "Lolita".....Puerner
5. Euphonium Solo, Arie, "Giuramento".....Mercadante  
Signor Giovannini.
6. Excerpts from Faust.....Gounod
7. (a) Lombardi.....Verdi  
(b) Czardas.....Braham
8. Humoresque, "Comic Tattoo".....Fahrbach
9. Waltz, "Vienna Darlings".....Ziehrer
10. National Hymn, "Hail Columbia".....Fyles

WEDNESDAY, JUNE 1st, 8 O'CLOCK P. M.

1. Overture, "Grand Jubilee".....Santelmann  
Written expressly for the Trans-Mississippi Exposition.
2. Scenes Pittoresque.....Massenet
  - (a) Marche.
  - (b) Air de Ballet.
  - (c) Angelus.
  - (d) Fete Boheme.

3. Intermezzo Pagliacci.....Leoncavallo
4. Mosaic from Boccaccio.....Suppe
5. Flute Solo, "La Sonambula".....A. Terschak  
Mr. Henry Jaeger.
6. Grand Concert Valse Brilliante.....Chopin
7. Descriptive Phantasia, "In the Clock Store"....Chas. J. Orth
8. Characteristic, "The Trumpeters of the Emperor," R. Vollstedt
9. Humoresque, "A Comical Contest".....Chas. Godfrey

SYNOPSIS: The Band tune up; principal performers try their respective instruments; competitors assemble to draw for the order of playing; rules read out by the manager, Signor Trombono—the performer causing most laughter to take the prize; judges prepare their papers; the contest commences, the competitors being Messrs. Clarinetto, Cornetti, Piccolini, Euphonio, Clarinetto Jr. and Fagotti; the judges take note after each variation; jealousy of the drummers; unexpected result, the prize being awarded to the base drummer, his performance having produced the greatest hilarity; termination of contest.

10. Fantasia, "The Voice of Our Nation".....Santelmann

THURSDAY, JUNE 2d, 2.00 O'CLOCK P. M.

1. March, "The Stars and Stripes Forever".....Sousa
2. Overture, "Merry Wives of Windsor".....Nicolai
3. (a) "The Dying Poet".....Gottschalk  
(b) Patrol, "Marching Through Georgia".....Sousa



MUSIC AT PAVILION — CONCLUDED.

4. Selection, "The Wizard of the Nile".....Herbert
5. Cornet Solo, "The Surf Polka"..... F. Steinhauser  
Mr. L. Larsen.
6. Sounds from the Sunny South.....Isenman
7. Waltz, "Angel's Dream".....Herman
8. Voyage on the Troop Ship..... Miller
9. Grand March, "Tannhauser".....Wagner
10. National Anthem, "My Country 'T is of Thee."

THURSDAY, JUNE 2d, 8.00 O'CLOCK P. M.

1. Overture, "Tannhauser".....Wagner
2. Grand Selection, "Aida".....Verdi
3. La Benediction des Poignards.....Myerbeer  
Grand Scene des Huguenots.
4. Paraphrase, "Loreley".....Nesvadba
5. Cornet Solo, "Fantasie Brillante".....J. B. Arban  
Mr. Walter F. Smith.
6. Damnation of Faust.....Berlioz
7. Waltz, "The Debutants".....Santelmann
8. Patrol, "American."
9. Descriptive, "Railroad Galop".....Downing
10. Patriotic, "The Star Spangled Banner."

FRIDAY, JUNE 3d, 2 O'CLOCK P. M.

1. March, "The Naval Militia".....Santelmann
2. Overture, "Bohemian Girl".....Balfe

3. International Congress.....Sousa
4. Characteristic, "On the Plantation".....Puerner
5. Cornet Solo, "Quant' Io t'amo".....Satta  
Mr. Walter F. Smith.
6. Selection, "Wang".....Arban
7. Intermezzo, "Cavaleria Rusticana".....Mascagni
8. Descriptive, "Hunting Scene".....Buccolossi
9. Grand Fantasie Lohengrin.....Wagner
10. "Hail Columbia."

FRIDAY, JUNE 3d, 8 O'CLOCK P. M.

1. Overture, "William Tell".....Rossini
2. Fantasie, "Cavaleria Rusticana".....Mascagni
3. Simphonie Unfinished (first movement only).....Schubert
4. Valse Invitation al le Valse.....Weber
5. Solo for Flute, "Le Carnival de Venice".....Demersseman  
Mr. Henry Jaeger.
6. Gems of Scotland.....Godfrey
7. Spring Jubilee on the Alps.....J. Gungl
8. Paraphrase, "My Maryland".....C. Heinemann
9. Three Quotations.....Sousa
  - (a) The King of France.
  - (b) I too was Born in Arcadia.
  - (c) Darkest Africa.
10. "The Star Spangled Banner."

# SONG OF WELCOME.

Composer, MRS. H. H. A. BEACH.

Words by HENRY M. BLOSSOM, JR.

## I.

Welcome, thrice welcome, to the people of our land,  
Welcome to the people of the world;  
Here North and South and East and West, united hand-in-hand,  
Have reared a city and their flag unfurled.

## II.

Here science weaves her wonders for the mind;  
Here stands arrayed the golden pride of art; [find  
And commerce with her winged feet hath searched the world to  
The treasures rare of many a far-off mart.

## III.

Welcome, thrice welcome, to the people of our land,  
And to the people of the world, all hail;  
And so forever may this splendor in their memory stand  
Undimmed, although its builded fabric fail.

## ..AMERICA..

---

My country 't is of thee,  
Sweet land of liberty,  
Of thee I sing.  
Land where my fathers died;  
Land of the pilgrim's pride;  
From every mountain side  
Let freedom ring.

My native country, thee,  
Land of the noble free,  
Thy name I love.  
I love thy rocks and rills,  
Thy woods and templed hills;  
My heart with rapture thrills  
Like that above.

Let music swell the breeze,  
And ring from all the trees  
Sweet freedom's song.  
Let mortal tongues awake;  
Let all that breathe partake;  
Let rocks their silence break;  
The sound prolong.

Our father's God, to Thee,  
Author of liberty,  
To Thee we sing.  
Long may our land be bright  
With freedom's holy light;  
Protect us by Thy might,  
Great God, our King.

# "BALDUFF"

---

MANUFACTURER OF \_\_\_\_\_

## ...Pure Ice Creams

Daily Capacity, 1,000 Gallons.

Balduff's \_\_\_\_\_

## Chocolate Bon-Bons.

1520 Farnam Street,

...OMAHA...

Telephone No. 711.

## ....CURRENT NOTES....



June 1st, 1898—Hurrah for the Trans-Mississippi! Hurrah for Nebraska! Hurrah for Omaha!



The heads of the departments of the Exposition are to be congratulated upon the results of their untiring efforts—a grand display—in magnitude surpassed only by the great World's Fair, in beautiful arrangement and decorations, unsurpassed.



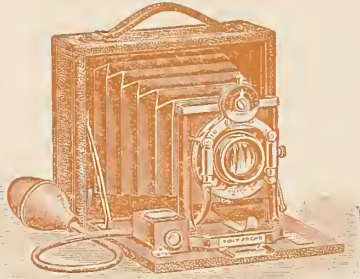
The visitor provided with pennies can always obtain an ice-cold drink of pure mineral water at one of the Solon Spring-Water Company's automatic fountains. Drop a penny in the slot, and gravity does the rest.



Messrs. Paxton & Burgess announce positively great attractions at their Omaha play-houses during the Exposition. There will be several well-known war plays, comic operas, and dramas of the old school. They assure the public that there will be no lack of first-class theatrical attractions in Omaha this season.

# KODAKS AND HAND CAMERAS

SEND  
FOR  
CATALOGUE



We Have Everything in the Camera Line—from  
\$2.50 to \$85.00—and all Photographic Supplies.

DARK-ROOM AND INSTRUCTIONS FREE.

Get a Camera Before Visiting the Exposition  
Grounds, and Make Your Own Souvenirs ❧ ❧

THE ROBERT DEMPSTER CO., PHOTOGRAPHIC SUPPLIES,  
1215 Farnam Street.

W. H. KIMBALL.

C. E. KIMBALL.

## KIMBALL BROTHERS Foundry and Machine Shop

....MANUFACTURERS OF....

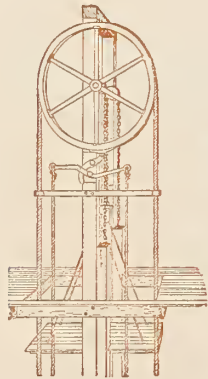
Hand, Electric and Power Elevators, Iron  
Railings and Stairs, and Columbia Scales.

Telephone 149.  
Ninth Street and Eleventh Ave.

Council Bluffs, Ia.



IMPROVED ELECTRIC,  
STEAM AND HAND  
POWER FREIGHT AND  
PASSENGER ELEVATORS.  
DUMB WAITERS.



## CURRENT NOTES.—Concluded.

---

Henceforth "Buffalo Bill" must look well to his laurels. Mr. Mattox, manager of the great Omaha Wild West show, on the Exposition Grounds, promises to equal the best in Cody's great show and introduce some more-thrilling scenes from Western life. Mr. Mattox is a quiet, unpretentious gentleman, and is thoroughly equipped for the enterprise he has undertaken. \* \*

Wm. H. Santelmann, Director of Band, United States Marine Corps, announces, in a letter to Prof. Kimball, Musical Director, the soloists of the band who will appear in the programs rendered during their engagement at the Trans-Mississippi Exposition, as follows:

MR. WALTER F. SMITH, Assistant Leader.

MR. LAURITZ M. LARSON, Cornet Soloist.

MR. HENRY JAEGER, Flute Virtuoso.

MR. JOHN TER LINDEN, Saxophone Soloist.

MR. JOSEPH GIOVANNINI, Euphonium Soloist.

MR. SAMUEL JOHNSON, Xylophone Soloist.

We regret that the above reached us too late to appear in the regular musical program.

\* \*

There will be concerts at the Auditorium by Theodore Thomas's Chicago Orchestra, and at the Music Pavilion, on the Grand Plaza, by the United States Marine Band, Saturday afternoon and evening, June 4.

\* \*

The next issue of the official program will appear June 4th, and will contain a full statement of events for the following week.

# GEORGE MITCHELL

Wholesale and  
Retail Dealer in

## Carriages

Surreys, Traps,  
Buggies, Wagons,  
Harness, Robes,  
.....Whips, Etc.

---

REPOSITORIES,

Nos. 1214, 1216, 1314 and 1316 Dodge St.,

OMAHA.

# George Mitchell's



Livery  
Boarding and  
Sales

## STABLES

---

BEST LIVERY RIGS  
IN OMAHA.....

---

Nos. 1114-1116 Dodge St. Telephone 1257.





Copyright, 1897.

MINES AND MINING BUILDING.

S. S. Beman, Architect, Chicago.

# JORDAN & CO. HEALTH FOOD PRODUCTS

REPRESENTING



Battle Creek Health Food Co.  
Sanitos Nut Food Co.  
Ralston Health Club Cocoa.  
Ralston Pura Water-Still.  
Ralston Health Yeast.

## Pantorium

YOUR CLOTHES PRESSED WHILE  
YOU SLEEP

Called For and Delivered.

DRESS SUITS FOR RENT.

Telephone 963.  
N. E. Corner 14th and Farnam Streets,

OMAHA, NEB.

# ATWOOD & GIANINI

1113 STEINWAY HALL.

## DESIGNERS AND CONTRACTORS

Interior Finish. Decorators.

CHICAGO.

DR. H. CLAYTON SUMNEY

## DISEASES OF THE SKIN

Office Hours, 10 a. m. to 5 p. m.

Telephone 1961.  
Suite 6, Continental Block

OMAHA



MACHINERY AND ELECTRICITY BUILDING.

OMAHA

# NATATORIUM

Howard St., Between 13th and 14th.

FINEST EQUIPPED

## PLUNGE AND TURKISH BATHS

WEST OF CHICAGO

*Water constantly changing....Condition of weather has no effect on temperature of water or atmosphere....REMODELED THROUGH-OUT....EXPERT ATTENDANTS....Heated by Steam*

ADMISSION TO PLUNGE, 25c ✕ TURKISH BATHS, \$1.00

OPEN ALL NIGHT

L. BEDFORD, PROP.,  
T. M. T. M. CLUB.

THE BEST PLACE TO BUY A WATCH

AND HAVE YOUR REPAIRING DONE WHILE  
IN OMAHA, IS AT

## "The Busy Jewelers"

1520 Douglas St.

The Jewelry Store where People like to Trade.

...J. L. COMBS & CO.

Second Floor, Ramge Building.

FRANK J. RAMGE

# ....TAILOR

Cor. 15th and Harney Sts.

OMAHA,



NEBRASKA.

# STATE COMMISSIONS.

## ARIZONA.

T. J. Barkeley.  
B. Heyman.  
Winfield Scott.  
Chas. R. Drake.  
J. B. Breathitt.  
Selim Franklin.  
W. R. Stone.  
E. B. Gage.  
F. A. Tritle.

H. J. Allen.  
J. H. Carpenter.  
Albert F. Potter.  
W. R. Campbell.  
M. J. Egan.  
Ben Williams.  
E. H. Cook.  
T. A. Riordan.  
J. R. Halsey.

## ARKANSAS.

W. G. Vincenheller, Pres.  
W. D. Matthews, Secy.  
H. L. Cross.  
E. M. Funk.  
E. H. James.  
A. W. Pool.  
L. P. Berry.  
E. Emmett Rogers.  
E. B. Weaver.  
W. T. Hopper.  
J. R. Newman.  
Eugene Barkman.  
X. O. Pindall.  
H. G. Hanna.  
J. R. B. Moore.  
J. C. Yancey.  
W. B. Folsom.  
A. C. Hull.  
A. Bertig.

W. P. Fletcher.  
S. C. Dowell.  
J. F. Walker.  
F. P. Hall.  
J. C. Irby.  
E. T. McConnell.  
J. B. Butts.  
A. S. Layton.  
H. H. Gallup.  
D. S. Helvern.  
Steve Carrington.  
W. M. Price.  
Rev. J. M. Lucey.  
Thomas Matthews.  
L. H. Owens.  
J. T. Pomeroy.  
J. R. Harris.  
Geo. R. Brown.  
L. A. Byrne.

Geo. Sengel.

## CALIFORNIA.

M. H. DeYoung.  
William H. Mills.  
Terry L. Ford.

Robert McMurray.  
Frank S. Johnson.  
Wendell Eaton.

C. M. Wooster.

## COLORADO.

Gov. A. H. Adams, Pres.  
A. T. Macdonald, Secy.  
Miss Grace Espy Patton.  
Harry A. Lee.  
Col. E. R. Goodell.  
John H. Barrett.  
Mrs. M. A. Shute.  
Prof. Anton Ellis.  
C. B. Schmidt.  
Mrs. A. E. Thayer.  
E. F. Bishop.  
M. L. Allison.  
J. B. Swan.  
Chas. E. Ward.  
W. J. Bennett.

## FLORIDA.

Hon. G. W. Wilson, Pres.  
S. B. Thompson, Secy.  
John D. Peabody.  
W. R. Carter.  
C. B. Rogers.  
Geo. W. Scobie.  
Hon. Geo. L. Bryant.  
C. K. McQuarrie.  
Hon. Henry Curtis.  
Hon. W. W. K. Decker.  
M. R. Marks.  
Frank P. Fleming.  
B. L. Porter.  
J. C. S. Timberlarke.  
Eric Van Axelson.  
W. S. Jordan.  
G. A. Danley.

## GEORGIA.

W. J. Northen, Chmn.  
E. F. Blodgett, Secy.  
W. A. Hemphill.  
J. S. B. Thompson.  
Gov. W. Y. Atkinson.  
W. A. Knowles.  
George Ketchum.  
H. M. Comer.  
Geo. C. Smith.  
C. E. Harman.  
F. H. Richardson.  
J. F. DeLacy.  
Edwin Brobston.  
Thomas K. Scott.  
J. F. Hanson.  
P. A. Stovall.

## IDAHO.

B. P. Shawhan, Vice-P.  
R. E. Green, Secy.  
Edward Richards.  
J. H. Murnane.  
A. B. Campbell.  
Montie B. Gwinn.  
James Hutchinson.  
George Chapin.  
J. P. Clough.  
B. F. Morris.  
Jos. Vincent.

## ILLINOIS.

Clark E. Carr, Pres.  
C. E. Hambleton, Secy.  
L. O. Goddard.  
E. S. Conway.  
Charles A. Mallory.  
Oscar P. Trahern.  
Edward C. Craig.  
William H. Stead.  
James A. Black.  
Charles C. Williams.  
William H. Harper.  
John M. Smyth.  
Ferdinand W. Peck.  
James P. Wheadon.  
George Wall.  
William D. Brinton.  
Louis H. Miner.  
Lafayette Funk.  
Randolph Smith.  
C. H. Keeler.  
Martin Kingman.

## INDIANA.

Frank B. Von Behren.  
W. W. Stevens.  
Claude Matthews.  
D. M. Parry.  
Horace E. Kinney.  
Eli Marvin.  
Fred Heath.  
Mason J. Niblack.  
Warder H. Hamilton.  
Mrs. V. C. Meredith.  
William Fortune.  
W. H. Sanders.  
Mortimer Levering.  
Charles McCulloch.

## IOWA.

S. H. Mallory, Pres.  
F. N. Chase, Secy.  
S. D. Cook.  
R. H. Moore.  
Allen Dawson.  
Owen Lovejoy.  
S. B. Packard.  
John H. Wallbank.  
J. E. E. Markley.  
J. F. Murray.  
Geo. W. McCoid.  
A. W. Erwin.

## KANSAS.

Geo. W. Glick, Pres.  
A. H. Greef, Secy.  
A. W. Smith.  
John E. Frost.  
A. C. Lambe.

# Beware of Impure Drinking-Water!

The Exposition Company has secured

## The Solon Spring-Water Co.'s

Automatic Drinking-Fountains, which  
will dispense

### Iced Curo Natural Spring-Water

...DURING THE EXPOSITION...



These Fountains are located throughout the Grounds and Buildings for public accommodation. The water is the **only safe drinking-water** upon the grounds, and the **purest natural spring-water** west of the Mississippi.

Drop a Penny in the Slot for a Drink... IT MAY SAVE YOUR LIFE



## STATE COMMISSIONS.—Continued.

### KENTUCKY.

Mrs. John B. Castleman. Mrs. James. F. Buckner.  
 H. H. Houston. Chas. H. Todd.  
 C. N. McElroy. Charles Blandford.  
 Logan C. Murray. Ed. C. Hopper.  
 Wilbur R. Smith. George W. Welsh.  
 J. P. McCartney. Ed. C. O'Rear.  
 W. B. Hansford.

### LOUISIANA.

Wm. Carlin Stubbs. Maj. J. G. Lee.

### MARYLAND.

Gen. T. J. Shryock, Pres. John M. Carter.  
 Harry J. Hopkins, Secy. Chas. C. Homer, Jr.  
 A. E. Booth. Mrs. William Reed.  
 Mrs. Matthew Markland. Miss Frances C. Davis.  
 Miss Lillie Forwood. J. Edward Abbott.  
 John M. Carter. George D. Landwehr.

### MINNESOTA.

J. L. Gibbs, Pres. Frank H. Peavey.  
 E. L. Danforth, Secy. W. D. Kirk.  
 Theo. L. Schurmeier. W. J. Footner.  
 Geo. R. Finch. Conde Hamlin.  
 E. A. Kirk. Chas. P. Noyes.  
 R. J. Phelps. W. W. Hefelfinger.  
 L. C. Pryor. Fred R. Salisbury.  
 J. Newton Nind. J. M. Anderson.  
 F. B. Dougherty. C. H. Graves.  
 A. D. Thompson. J. L. Greatsinger.  
 V. Simpson. A. T. Stebbins.  
 Hudson Wilson. W. J. Oleott.  
 John H. Rich. N. S. Gordon.  
 O. H. Myron. F. A. Gartside.  
 E. G. Valentine. M. H. Leland.  
 Elmer E. Adams. Geo. Pervis.  
 John I. Bernard.

### MISSOURI.

M. V. Carroll, Secy. Col. John A. Knott.  
 W. H. Mansur. J. C. Evans.  
 E. T. Abbott. L. A. Vories.

### MISSOURI.—Concluded.

R. M. Davis. Dr. J. H. Hedgpeith.  
 Jesse H. Davis. Frank Freytag.  
 John F. Richards. G. M. Walden.  
 Geo. W. Fuller. J. W. Baldwin.  
 J. D. Tolson. John R. Rippey.  
 Jerre Cravens. H. W. Ewing.  
 John R. Kirk. A. S. Houston.  
 H. A. Blossom. Charles A. Lemp.  
 C. H. Spencer. C. P. Walbridge.  
 F. M. Sterrett. Geo. D. Reynolds.  
 J. H. Berkshire. Maj. W. W. Ward.  
 S. A. Stuckey. C. M. Manker.  
 Hon. J. F. Davidson. C. C. Bigger.  
 W. J. Rouse. Ed. E. Aleshire.  
 L. C. Burne. F. W. Maxwell.  
 Louis Hax. A. J. Fleming.  
 N. F. Murray. Harry E. Wyatt.  
 Frank G. Graham. Phil. E. Mullins.  
 W. W. Morgan. Hugh J. McGowan.  
 Frank B. Hearne. W. H. Allen.  
 Willis Humphrey. Judge J. N. Dalby.  
 Dr. R. H. Jesse. John O'Day.  
 G. A. Atwood. A. Nelson.  
 Frank Farris. C. D. McLure.  
 F. E. Marshall. P. J. Toomey.  
 W. H. Phelps. A. H. Danforth.  
 Henry R. Whitmore. Hon. C. B. Farris.  
 C. A. Emery. Hon. William Dawson.  
 John H. Taylor.

### MONTANA.

W. H. Sutherland, Chmn. Marcus Daly.  
 A. L. Babcock. W. G. Conrad.  
 W. A. Clarke. A. J. Seligman.  
 J. R. Latimer. W. W. Morris.

### NEBRASKA.

Wm. Neville, Chairman. H. M. Boydston.  
 C. D. Casper, Secy. C. A. Whitford.  
 W. A. Poynter. W. M. Dutton.  
 J. N. Campbell.

### NEVADA.

W. C. Grimes. J. F. Dangbur.  
 George Russell. J. A. Yerington.  
 Abram Laird. Geo. S. Nixon.  
 J. A. Blossom. T. J. Osborne.  
 D. C. Simpson. Andrew Maute.  
 John Wagner. James H. Kinkead.  
 Enoch Strother. J. B. McCullough.  
 William Burke.

### NEW JERSEY.

Robt. M. Floyd, Pres. Eva Henry Williams.  
 E. C. Hazard, Secy. Elisha B. Gaddis.  
 Jonathan H. Blackwell. Walter S. Lenox.  
 John Edwards Barbour.

### NEW MEXICO.

L. B. Prince, Pres. J. T. McLaughlin.  
 T. J. Curran, Secy. John Morrow.  
 W. S. Hopewell. W. H. H. Llewellyn.  
 J. J. Leeson. S. H. Day.  
 Robert W. Tansill.

### NEW YORK.

C. M. Depew, Pres. John Jacob Astor.  
 A. M. Wheeler, Secy. Henry B. Herbert.  
 Abel E. Blackmar. Charles N. Stowe.  
 John C. Graves. Jacob Amos.

### NORTH DAKOTA.

C. A. Lounsbery, Pres. J. B. Power, Secy.  
 C. B. Little.

### OHIO.

Senator H. E. Valentine. Senator W. G. Brorein.  
 Hon. Harry C. Mason. Hon. Stacey B. Rankin.

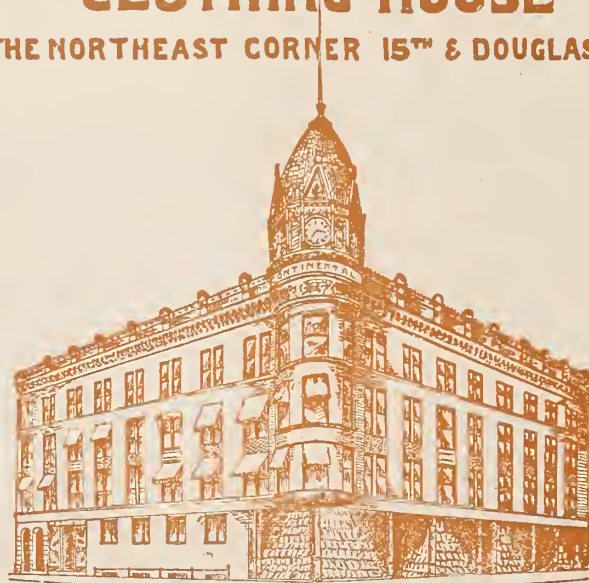
### OKLAHOMA.

J. C. Post, chairman. S. T. Varrico.  
 J. C. North. C. W. Points.  
 M. Burke.

# CONTINENTAL

## CLOTHING HOUSE

THE NORTHEAST CORNER 15<sup>TH</sup> & DOUGLAS STS.



THE MOST POPULAR TRADING PLACE IN OMAHA.

**ONE PRICE — HONEST GOODS — SQUARE DEALING**

IT'S THE BUILDING WITH THE BIG CLOCK IN TOWER.



# STATE COMMISSIONS.—Concluded.

## OREGON.

W. S. Mason, Pres.  
J. F. Batchelder, Secy.  
J. G. Day.  
J. O. Hanthorn.  
R. D. Inman.  
J. A. Wright.  
B. F. Alley.  
W. E. Hurd.  
Phillip Metschan.  
W. C. Tweedale.  
Lot. Livermore.  
Henry E. Dosch.  
C. C. Beekman.  
H. B. Miller.  
O. J. Olsen.  
J. E. Haseltine.  
E. P. McCornack.  
E. J. Frasier.  
O. N. Denny.  
E. V. Carter.  
F. S. Stanley.  
D. M. French.  
F. S. Peet.

## SOUTH DAKOTA.

A. McKinney, Vice-P.  
Chas. E. Davis, Secy.  
Martin Chapman.  
Hance Murphy.  
O. H. Mann.  
John Hayes.  
W. L. Gardner.  
Harris Franklin.  
John Stabler.  
C. A. Jewett.  
Hugh Smith.  
C. V. Gardner.

## TENNESSEE.

Theodore Cooley.  
Van L. Kirkman.  
Capt. H. C. Ward.  
J. B. Killebrew.  
Joe W. Allison.  
A. J. Harris.  
Paul F. Kefauver.  
J. W. Roseman.  
W. L. Chapman.  
C. V. Brown.  
John J. McCann.  
John W. Morton.  
W. T. Davis.  
J. M. Safford.  
George M. Goodwin.  
W. R. Rankin.  
F. H. Ewing.  
H. L. Bedford.  
G. W. Davenport.  
S. M. Yancey.  
John T. Essary.

## TEXAS.

S. J. T. Johnson, Vice-P.  
J. F. Elliott.  
Jas. I. Moore.  
J. L. Elbert.  
Paul Wipprecht.  
P. A. Smith.  
John Willacy.  
Warren Reed.  
R. L. Ross.  
A. B. McKie.  
H. P. Atwater.  
A. Templeton.  
T. D. Rowell.  
J. R. Currie.  
E. S. Peters.  
R. W. Andrews.  
H. T. Sims.  
Ben. A. Reisner.  
A. N. Evans.  
R. M. Cash.  
L. P. Wilson.  
R. A. Greer.  
John M. Cleiburn.  
B. F. McNulty.  
J. J. Fairbanks.  
J. D. Ford.  
Dan. S. Malven.  
W. L. Vining.  
W. A. Fields.  
D. C. Kolp.  
Tom Richardson.  
J. A. Templeton.  
A. C. Green.  
M. S. Duffie.  
J. D. Rudd.

## UTAH.

L. W. Shurtliff, Chmn.  
Heber Bennion.  
P. J. Lannan.  
T. R. Cutler.  
Miss Maggie Keogh.

## WASHINGTON.

George W. Thompson.  
Philip F. Kelley.  
W. S. Spillman.  
Capt. C. H. Thompson.  
George B. Stetson.  
L. M. Wood.  
J. E. Baker.  
C. H. Clark.

## WEST VIRGINIA.

B. Walker Peterson.  
Henry G. Bayliss.  
J. W. Furbee.  
E. Ensign.  
Lyman Steadman.  
D. C. Westonhaver.  
Jacob S. Hyer.  
J. M. Camden.  
P. W. Morris.  
John A. Preston.

## WISCONSIN.

John C. Koch, Chairman.  
Walter W. Pollock, Secy.  
A. C. Clas.  
Ferdinand Kiechefer.  
R. G. Thwaites.  
Walter Alexander.  
Isaac Stephenson.  
J. B. Treat.  
Thomas M. Blackstock.  
H. D. Fisher.  
Willard E. Carpenter.  
Mrs. Leonard Lottridge.  
Mrs. Caroline H. Bell.  
Miss Ella Roberts.  
L. G. Kellogg.  
Prof. E. E. Goff.  
A. J. Phillips.  
August Uehlein.  
John E. Hansen.  
J. A. Watrous.  
E. E. Bryant.  
John Hicks.  
W. T. Lewis.  
J. H. Stout.  
Charles H. Baxter.  
F. A. Dennett.  
Ernest Funk.  
Mrs. Angus Cameron.  
Mrs. John Winans.  
Mrs. T. B. Goodrich.  
A. J. Webster.  
A. L. Hatch.  
William Toole.  
G. H. Greenbank.  
Hamilton H. Gray.

## WYOMING.

Joseph M. Carey.  
A. D. Kelly.  
W. R. Schnitzer.  
L. R. Bresnahan.  
M. R. Johnson.



ONLY LINE

..TO..

Kansas City and St. Louis

WITHOUT CHANGE OF CARS.

---

Pullman Sleepers and Reclining Chair Cars on all Trains

(SEATS FREE.)

---

NEW OFFICE LOCATION :

South-East Corner 14th and Douglas Streets.

---

J. O. PHILLIPPI,  
Asst. Gen'l Freight and Passenger Agt.

THOS. F. GODFREY,  
Passenger and Ticket Agent.



LIBRARY OF CONGRESS



0 019 713 603 0

MINERVA TERRACE, YELLOWSTONE PARK.



### After you have seen the Exposition

Go west via the BURLINGTON ROUTE to Colorado, California, the Black Hills, or Yellowstone Park. The trip is quickly and comfortably made, rates are reasonable, the weather perfect, and the scenery grand beyond description.

Descriptive pamphlets, tickets, and sleeping-car berths, at Ticket Office, 1502 Farnam Street, or at Depot, 10th and Mason Streets.